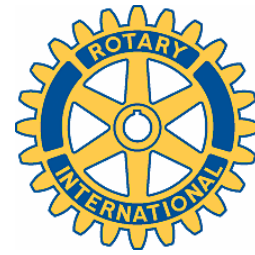




District 6420 NEWS!

Rotary International
Eldon T. Leemhuis, Governor

February 2008



Wilfrid J. Wilkinson, R-I President, 2007-2008

“February is World Understanding Month”



Monthly Attendance Report: www.rotary6420.org
District 6420 forms & info: www.rotary6420.org
R-I forms & info: www.rotary.org
LA Convention Info: www.rotary.org
DG Eldon : dg6420for2007_2008@yahoo.com

UPCOMING DISTRICT EVENTS & DATES

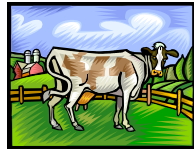
Keep current at:

www.rotary6420.org or www.rotary6420.net
and click on **CALENDAR**

- Feb 7 Our GSE Team departs for England / Wales
- Mar 1 District Leadership, Comm. Chair & AG training
- Mar 6 PETS I at Deer Valley
- Mar 7-8 Outbound Youth Orientation at Rock Falls
- Mar 15 PETS II at Kishwaukee Community College

HELP!!!

We need to locate a
cattle farm
QUICKLY!!!



Our Inbound Scholar Alex has an assignment in his MBA program to evaluate a farm that raises cattle... obviously, he's not too familiar with the farmers in our areas. He needs to be on this project my **THIS MONDAY**. If you have any contacts that could help him, contact DGNE Elise at jhawks77@cs.com **QUICKLY**.

From the Governor

We had a remarkable turnout for our four mid-year meetings. 43 of the 48 clubs were represented, 37 by their club presidents and 35 by their incoming presidents. Each received update reports from Membership Chair PDG Fred Luckenbill, Foundation Chair PDG Anita Papich, RYLA Committee Member PDG Pat Burch, and Youth Protection Chair Steve Kuhn or Youth Protection Office Kathy Kwiat-Hess. The food became a little slim at one of the meetings. 25 Rotarians were signed up and 33 showed up. We don't plan and pay for a 33% walk-in crowd. So in the future

PLEASE, when we ask for you to register for an event, **PLEASE** do so.

During the first two meetings, DGE Jim Prather spoke on some of the plans for 2008-2009, which did concern both membership and foundation.

GET THESE DATES MARKED

DGE Jim has announced that the PETS training sessions for 2008-2008 will be held on Thursday evening, March 6th at Deer Valley Country Club, about 10 miles south of Rock Falls on Route 40. PETS II will be on Saturday, March 15 at Kishwaukee Community College about 8 miles west of DeKalb on Route 38. Complete information is on page 6 of this newsletter.

At the mid-year meetings all clubs received the 2007-2008 Club & Member Awards that are available this year. There were 19 of them listed. Please make sure that your club committee chairs are aware of these requirements and due dates:

- Feb. 28 Club Achievement Award for Literacy
- Feb. 28 Literacy Project Sustained Excellence Award
- Feb. 28 Recognition for Individual Rotarian for Outstanding Service in Literacy
- Feb. 28 Club Innovative Literacy Project
- Feb. 28 Public Relations Newsletter Contest
- Mar. 15 External Relations Best Coop Project Award
- Mar. 28 Governor's Public Relations Award
- Mar. 28 Club Officer of the Year
- Mar. 28 New Rotarian of the Year
- Mar. 28 Rotarian of the Year
- Mar. 28 District Service Above Self Award
- Mar. 28 New Generations Award
- Mar. 30 RI Public Relations Award
- Mar. 31 Presidential Citation
- Apr. 15 RI Recognition of Membership Dev. Initiatives
- May 15 Recognition of Small Club Member Growth
- May 15 RI Membership Dev & Extension Award

Good luck to all of our clubs.

DG Eldon

We are in no future need of politicians; we need some statesmen now.

Paul Harris
The Rotarian, March 1918

Where in the world are they?



Kelsey didn't experience any major culture shocks during her adjustment from Sterling to Belgium. "With school, I was lucky because there is another exchange student from Mexico with me and also a girl who is Belge but her parents are from England, so she speaks English and was able to help me a lot in the beginning. I was also very capable of adapting seamlessly into my new environment."

Sarah found the culture a little different in Finland than it was in Rock Falls. "Just getting use to a shy culture was probably one of the biggest shocks to me. I am viewing American reality shows and I just look and say, 'wow, we really do have a crazy, outgoing culture'. The way that I eat has been drastically changed. I guess the shock of little or no salt intake was hard on my body, but I am not complaining anymore. I eat much healthier here. When I first arrived in Finland, almost every meal, I had to ask my host parents to 'please pass the salt', because everything was so tasteless to me. Americans are so used to eating rich, and tasty foods, that it took a while to get used to a new way of eating. (As well as having to eat potatoes every day!!! Blah!)"

Greer, who has traded the Rock Island winter for one in Venezuela, does miss the cold. And what were the main "shocks" when getting off the plane?

1. How revealing the girls dress here.
2. How much attention "gringos" or exchange students get by the public. (I get stared at 24/7)
3. The Poverty.
4. The way the government works as well. I was here during all the elections for Chavez...and it was very interesting.

WORLD COMMUNITY SERVICE MATCHING GRANTS

Many of our clubs have requested assistance from the District for World Community Service Matching Grants. Plans are being made to have a Rotary International Grant Seminar in conjunction with PETS I on Thursday evening, March 6th at Deer Valley. This seminar is **NOT** for your club president or incoming president. It is for one person in your club who has an interest in the grant program and will follow through with any successful grant application for the duration of the project. The District Foundation Committee has set a limit of \$10,000 per year maximum with no single grant receiving more than \$2,000. In addition, no club request will be considered if the requesting club did not send a representative to this grant writing seminar. Material will be provided to each club during this seminar and explained by a representative from Rotary International in Evanston. As of 10 minutes before this newsletter started being sent, Rotary International confirmed that **"they should be able to provide a representative"** for this scheduled meeting. The reservation form for this Grant Seminar is part of the PETS I reservation form that is described on page 6 and available at www.rotary6420.org. Club Presidents will be notified if there is a change from Rotary International.

River Cities & The Rotary Foundation



At the mid-year meeting in Geneseo last month, PDG Pat Burch presented the officers of the River Cities Rotary Club the 1st Place Banner from The Rotary Foundation for their club's contributions to The Rotary Foundation. Accepting the banner were President-Elect Rick Kessler, President Amy Nielsen-Wood, Secretary Kelley Doty, AG Sue Hebel and PDG Pat Burch. The Per-Capita for their club was \$632.28.

Member Access to the RI Website

All Rotarians, especially the club presidents and secretaries should be registered at www.rotary.org. The process is simple. Click on MEMBER ACCESS followed by REGISTER NOW. It will ask you your District Number, which is 6420 followed by your club number. That number is in the 2007-2008 District Directory on your club page. The last number is your individual member number. That number is on the label of your Rotarian Magazine – second line down that starts with #0_____. Simply leave off the #0 and enter the remaining digits. RI will ask for your e-mail address the you will receive an e-mail with your temporary password. Club presidents and secretaries can add and remove club members and several other items. ALL Rotarians can check on their giving to The Rotary Foundation.

GET REGISTERED TODAY



Semi-Annual Dues



Yes - it is time to pay the piper. During the month of January, your club SECRETARY should have received from Rotary International a form labeled as "ROTARY INTERNATIONAL SEMIANNUAL REPORT JANUARY 2008". This is your Rotary International dues for the second half of 2007-2008. It lists, among other items, your entire club membership. PLEASE get the form filled out and return it with your check. Make sure you include your club number on the check. Rotary is receiving over 32,000 checks this month from 170+ countries. I would assume it is quite a headache for those in accounting. If you have not received this report, contact the Data Services Department at 1-847-866-3171 or fax 1-847-733-9340. Their e-mail address is data@erotary.org. Make sure you include your club name and number on all reports.

Presidential Humor by Bob Dole:

On John Adams: "Often cranky and full of insults – an eighteenth century Don Rickles".

WANT SOME \$ FOR YOUR CLUB ?

2007-2008 Governors Challenge: For you club presidents, don't forget about the District 6420 Governors Challenge where you can win up to \$500 for your club. Complete details of how your "participation points" add up are in the PETS manual provided to you last March. The object is **ROTARY PROGRAM PARTICIPATION** and **ON TIME REPORTING**. Second place is \$300 and \$200 for 3rd place.



FEBRUARY IS HERE NOW is the time

What a great opportunity for your students to experience youth exchange on a short and limited basis. This program is a real exchange where your student and an overseas student actually experience the EXCHANGE. Your son or daughter can live with a family for 4 weeks followed that the son or daughter in that family coming back with your child and living in your home for 4 weeks. Just imagine the experience of a month in Finland, France, Germany, Italy, The Netherlands, Spain, Sweden, Switzerland, Taiwan, Thailand or the Ukraine.

Simply go to www.summerexchange.org. Our District Chair for Short Term Youth Exchange is Scott Shore, Granville Rotary Club, P.O. Box 418, Granville, IL 61326-0418. Ph: 815-925-7177 shores@ivnet.com



ATTENTION
QUAD CITY AREA ROTARIANS
THE UTHS INTERACT CLUB
is looking for
HUNGARY ROTARIANS

The United Township High School Interact Club is hosting a taco dinner on Friday, February 8th from 5:00 – 7:30 pm, before the UT-Moline basketball game. (That price is even better than the cost of a meal at a Rotary meeting) Tacos are 2 for \$3 or 3 for \$5 and include drink and dessert. The fundraiser will benefit senior Becky Anderson who is fighting leukemia. Please contact Angie Ashcraft or Sue Rosenthal of the East Moline/Silvis Club for tickets.

Abraham Lincoln: In the autumn of 1863, beset as always by office seekers, Lincoln's physician told him that he was suffering from varioloid, a mild form of smallpox. "Is it contagious?" asked the president. "Very contagious," the doctor assured him. Lincoln seemed oddly pleased. The doctor asked why. "There is one good thing about this," the president told him. "Now I have something I can give everybody."
... Bob Dole



OUR FAMILY OF ROTARY.

Are you part of it?

Most of our Rotary Clubs have some special family nights included as part of their year long calendar. Our District Family of Rotary Committee would like to know in what type of activities you and your clubs participate. Several of you have already filled out the attached questionnaire and returned it to Rebecca White. If you have not already done so, that form is attached. Please print it out, fill it out and mail it to our Committee Chairs Linley and Rebecca White. The address is on the form. When you clicked to open this newsletter, you also saw that form. **SIMPLY GO BACK AND CLICK ON THE FAMILY OF ROTARY FORM.**

World Water Week

In a joint effort, Rotarians and UNICEF plan to raise \$1,000,000 in the week proceeding World Water Day, which is 22 March 2008.



Diners throughout America are invited to pay \$1 for the tap water they usually enjoy for free in support to fight for safe water and sanitation in third world countries. Hopefully to raise one million dollars one dollar at a time.

UNICEF and WASRAG are currently working to provide children and their families with sources of clean water, adequate sanitation facilities and hygiene programs in 90 countries.

This a joint effort to provide safe water and sanitation throughout the world between the organizations of:

UNICEF & the Rotary action group WASRAG*

Article supplied by WASRAG member PDG Bob Newlon

And a few more District Directory changes

Page:	Name:	Should be:
43 & 76	Pat Ross	pross@cusd50.org
49 & 111	Debbie Quinn	debbiequinn@mchsi.com
71	Peter Flynn	peter.flynn@freeport.k112.il.us
83	Tom Bourke	tombourkejr@gmail.com
84	Justin Setchell	justin_setchell@yahoo.com
88	Mark Harkness	markharkness@grics.net
100	Bob Sondgeroth	bsondgeroth@whitesideroe.org

On George Washington: "First in peace, first in war, but middle of the pack when it came to humor."
.... Bob Dole

Another OOPS by the Governor
Are you in need of a club program?

I will blame it on having a SENIOR MOMENT but regardless of why, in the January newsletter, I included an article on Korah Winn and asked that she be contacted at www.dovewithin.com. That is her website. Her e-mail is korahwinn@hotmail.com



If you would like a wonderful program, on her year as an Ambassadorial Scholar to Belfast, Northern Ireland, please contact her. As I said last month, you may have to wait until she finds a free day in her work schedule, but you will find out that the wait was worth it.

Addresses for Rotary International

Normal correspondence is sent to:
 Rotary International
 One Rotary Center
 1560 Sherman Avenue
 Evanston, IL 60201



To send Foundation money the address is:
 The Rotary Foundation
 14280 Collections Center Drive
 Chicago, IL 60693
Always include your club name and club number

To send dues the address is:
 Rotary International
 14255 Collections Center Drive
 Chicago, IL 60693
Always include your club name and club number

Questions concerning your Rotary International Dues or outstanding balance, contact:

Irene Samoylovich
Irene.samoylovich@rotary.org
 Phone: 847-866-3463

Always include your club name and club number

Rotary International is receiving letters and funds from 32,000 clubs in 172 different countries. You MUST include your club number on all checks and correspondence. Your club number is listed on your page in the District Directory.

NEW PAUL HARRIS SUSTAINING MEMBERS

River Cities: Kelley Doty
 Amy Nielsen
 Todd Weber

Paul Harris Sustaining Members are those who have committed themselves to becoming Paul Harris Fellows when their contributions reach \$1,000.

New Paul Harris Fellows in November

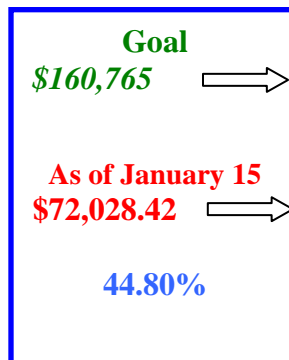
E. Moline/Silvis: Tony Columbia PHF +1
Milan: Toni Gasper
 Dave Poffenbarger
Morrison: Mike Blean
 Stan Steines
 Dan Vandermyde
Stephanie Deckro PHF +1



MOTTO TO LIVE BY

Life should NOT be a journey to the grave with the intention of arriving safely in an attractive and well preserved body, but rather to skid in sideways, chocolate in one hand, latte in the other, body thoroughly used up, totally worn out and screaming "WOO HOO, what a ride!!"

DISTRICT 6420
ANNUAL GIVING GOAL
\$160,765



April 25-27
Is this date on your calendar?
District Conference
in Ottawa !!!



Plan to join the rest of the Rotarians around the District to the 2007-2008 District Conference. During the month of February you will be receiving information as to the events and activities as well as the registration forms. Join us to see what is happening around District and our Rotary World.

In addition to the club displays, the **SILENT AUCTION** for **THE ROTARY FOUNDATION** will be with us again. Each club is being asked to bring an item with an approximate value of \$50 for this auction. You are also asked to bring your checkbook so that you can bid on these items.

The Spouse Tours will include the many murals of Ottawa's Brush with History program. The above photo is of the painting of the Peltier Marble Factory.

Show you are a Rotarian
as you drive the highways.



The State of Illinois has approved the **ROTARY** license plate, providing there are 800 auto owners who order the plate. For the application, go to www.rotary6420.org and click on CALENDAR followed by DOWNLOADS. One page is the basic information on costs and the other is for the application.

And unfortunately, from time to time we must offer

But Condolences

To the families of:

Granville: Donald Nelson
River Cities: Gerald Tyrrell
Wenona: Bill Marston



Photo by: Ashley Krepps, Youth Exchange 2006-2007

Virginia R. Speckman

wife of PDG Keith Speckman 1993-1994 passed away on Tuesday, January 15th in East Moline. With the love of Arts, she held a Masters Degree from the University of Iowa in Graphic Arts and spent time touring and studying art in England, France, Germany, Spain and Italy. She is survived by her husband Keith Speckman, 104 Elm Street, Port Byron, IL 61275



Each club was provided their **Rotary Youth Leadership Awards** packet at the Mid-Year meetings in January. District RYLA Chair Dave Diamond has provided you with not only report on why you should be sending students to this camp, but also the tentative weekend schedule as well as the application blank.

Application deadline: April 11, 2008
RYLA Weekend: May 2-4, 2008

On Richard Nixon: "Those weren't jokes that were deleted from the Watergate tapes." Bob Dole

We Welcome our Newest Rotarians in District 6420

E. Moline/Silvis: Tony Columbia

Galena: Tom Grant

Granville: Jerry Kriewald

Ill. Valley Sunrise: Allison Ryan

Loves Park: John Hurley

Dan Reece

Milan Corrections:

Cathy Edwards

Al Fiscus

John Ryan

Dave Malnar

Oregon: Seth McCause

Ottawa: Taneva Baker

Barb Brannon

Wendy Posada

Marilyn Urso

Pecatonica: Shari Bouray

William Faller

Greg Hachmeister

Angela Larson

Tom Volscho

Twin Cities: Dean Ahlers

Michael Clark

Christopher Preston

Eileen Schmelzel

Mark Schmelzel

E-mail me the names of your new club members so they can be welcomed to Rotary in our District Newsletter.

On Ronald Reagan: Reagan was perpetually suspicious of Washington's tendency to tax and spend. He defined a taxpayer as "someone who works for the federal government but doesn't have to take a civil service examination."

.... Bob Dole

Community Service

Whether we do much or little in the way of public work, it is apparent that there is a large and unique field of usefulness in Rotary. Possessing as we do red blood in our veins, it is fair to assume that we shall not be indifferent to the welfare of the communities in which we exist, nor unwilling to lend a hand to the doing of those things in interest of the public which come within the proper sphere of our activities.

Paul Harris
The Rotarian
September 1912



President Elect Training Session

P.E.T.S

Attention all Rotarians: Make note of these VERY IMPORTANT upcoming district meetings and mark down on your calendars the meetings that are important to you.

March 1, 2008 Leadership, District Committee Chair and AG training 12:30pm-4:00pm at CGH Medical Center, Sterling.

Who should go: 2008-2009 District Leadership, District Committee Chairs and AGs

For all involved this will be a day to prepare you for next Rotary year.

March 6, 2008 PETS I, District Assembly, Club Secretary/Treasurers, Club Public Relations officers, and the Rotarian/s who are interested in Club Matching Grants.

5:30pm-9:00pm at Deer Valley Country Club, Rt. 40, 8 miles south of Rock Falls.

Who should go: 2008-2009 Club Presidents, Secretaries/Treasurers, Club PR person, and the club Rotarian/s who is interested World Communities Service and in the Matching Grants and who will be doing that job for a few years.

President Elects will be voting on next year's beget and planning your year as Club President. For all the other participants this will be a night of training for the future.

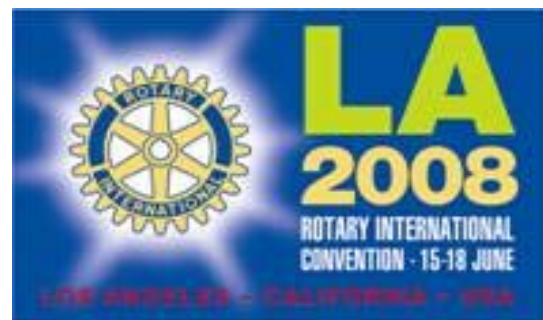
March 15, 2008 PETS II training. 8:30am-2:30pm Kishwaukee College

Who should go: Club President Elects, District Committee Chairs and any Rotarian who would like to know more about Rotary.

District Leadership and Committee Chairs will be informing us about what they have accomplished and what is their future plans of the upcoming year of Rotary.

Agendas and registration forms will be on our district website: www.rotary6420.org/ and click on the "calendar" box.

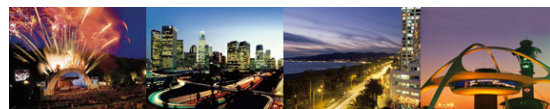
SIGN UP NOW!!!



Register before 31 March and save \$40.00

The process is simple -

www.rotary.org



www.rotary2008.com

International Service

There may be differences of opinion as to how far Rotary clubs should participate in civic activities and as to whether entertainments are a necessary part of club life; but the gradual elevation of a plane of business during recent years has brought men to a realization of the fact that there is something to business besides profits and that there is a much satisfaction in giving the other fellow an honest run for his money as there is in any other thing in life.

Paul Harris
The National Rotarian,
November 1911

Membership and Attendance for District 6420

	Members		Attendance												For the Month
	July 1	July	Aug	Sept	Oct	Nov	Dec	Jan	Feb	Mar	Apr	May	Jun	December 31	
Belvidere	50	55%	54%	54%	64%	55%	55%	49 (-1)	
Belvidere Bright Horizons	13	60%	55%	60%	60%	60%	60%	13	
DeKalb	25	53%	60%	63%	61%	55%	74%	27 (+2)	
Dixon	69	63%	57%	58%	58%	64%	_____	73 (+4)	
East Moline – Silvis	108	83%	81%	81%	74%	77%	77%	106 (-2)	
Erie	14	62%	73%	50%	65%	76%	65%	13 (-1)	
Freeport	86	70%	73%	70%	71%	72%	69%	92 (+6)	
Freeport Sunrise	16	73%	76%	69%	77%	69%	76%	18 (+2)	
Galena	81	69%	78%	74%	86%	66%	69%	84 (+3)	
Geneseo	52	62%	65%	70%	69%	_____	71%	52	
Granville	31	68%	73%	78%	81%	73%	80%	32 (+1)	
Harvard	19	63%	68%	60%	62%	67%	60%	15 (-4)	
Henry	37	76%	84%	81%	84%	72%	72%	36 (-1)	
Illinois Valley Sunrise	35	48%	55%	58%	53%	53%	67%	35	
Kishwaukee Sunrise	48	69%	70%	76%	73%	78%	86%	44 (-4)	
Lacon	23	72%	70%	74%	78%	72%	83%	24 (+1)	
LaSalle	42	69%	65%	63%	61%	54%	60%	55 (+13)	
Loves Park	41	85%	83%	83%	82%	81%	93%	42 (+1)	
Marseilles	19	75%	63%	65%	72%	75%	72%	20 (+1)	
Mendota	13	76%	100%	92%	72%	92%	92%	12 (-1)	
Milan Area	33	54%	58%	54%	67%	66%	67%	37 (+4)	
Moline	152	74%	74%	66%	76%	71%	81%	149 (-3)	
Morrison	51	62%	64%	58%	61%	67%	69%	50 (-1)	
Mount Carroll	19	55%	44%	50%	50%	51%	42%	21 (+2)	
Northern Winnebago County	17	41%	59%	58%	56%	70%	52%	16 (-1)	
Oregon	56	53%	56%	53%	55%	53%	57%	57 (+1)	
Ottawa	76	58%	62%	65%	62%	53%	61%	80 (+4)	
Ottawa Sunrise	18	61%	75%	75%	69%	73%	80%	21 (+3)	
Pecatonica	12	87%	58%	77%	68%	72%	64%	18 (+6)	
Peru	47	72%	63%	62%	66%	70%	53%	46 (-1)	
Plano	18	57%	50%	56%	49%	68%	65%	19 (+1)	
Princeton	76	83%	89%	87%	86%	83%	72%	80 (+4)	
Quad Cities	19	68%	65%	67%	44%	71%	60%	21 (+2)	
River Cities	31	47%	59%	62%	60%	63%	67%	30 (-1)	
Rochelle	88	59%	66%	58%	66%	66%	54%	93 (+5)	
Rock Falls	24	89%	88%	93%	79%	85%	84%	25 (+1)	
Rock Island	110	60%	59%	62%	68%	66%	64%	104 (-6)	
Rockford	231	n/a	n/a	39%	38%	41%	39%	217 (-14)	
Rockford East/Cherry Valley	38	68%	63%	61%	60%	64%	66%	38	
Sandwich	18	83%	82%	73%	80%	69%	_____	16 (-2)	
Savanna	34	73%	63%	65%	64%	69%	69%	34	
Sterling	59	78%	37%	75%	65%	64%	_____	64 (+5)	
Streator	30	38%	46%	52%	52%	50%	53%	30	
Sycamore	78	66%	58%	67%	63%	63%	63%	77 (-1)	
Toluca	17	_x_	_x_	62%	76%	62%	_____	17	
Twin Cities	34	67%	64%	67%	67%	71%	_____	36 (+2)	
Walnut	25	72%	78%	91%	87%	70%	79%	24 (-1)	
Wenona	19	60%	61%	71%	71%	70%	59%	19	

=====

2252 per Rotary International July 2007 records

=====

2281

Secretaries: Record your attendance, new members, new Paul Harris Sustaining Members & Paul Harris Fellows at www.rotary6420.org and click on CALENDAR.